

Benchmark: MSCI EAFE Index

| Style Box | VALUE | VALUE BIAS | CORE | GROWTH BIAS | GROWTH |
|-----------|-------|------------|------|-------------|--------|
| LARGE CAP | ● | ● | ● | ● | ● |
| MID CAP | ● | ● | ● | ● | ● |
| SMALL CAP | ● | ● | ● | ● | ● |

Return to Risk Statistics US\$

(as of June 30, 2007)

| | 3 Year | 5 Year |
|--------------------|--------|--------|
| Standard Deviation | 8.8% | 16.1% |
| Sharpe Ratio | -0.58 | -0.28 |
| Return to Risk | 1.86 | 0.80 |
| Best Quarter | 13.2% | 17.2% |
| Worst Quarter | -2.4% | -19.2% |

General Information

- Date established: 1955
- Assets under management: CAD \$62.3 billion
- Number of investment professionals: 40
- Average number of holdings: 30-70
- Average annual turnover: 10-15%
- Average market capitalization: USD \$80.7 billion
- Current yield: 2.17%

Profile

Founded in 1955 as an investment research firm, Jarislowsky Fraser entered the investment management business in the early 1960s. The firm is totally independent and has no corporate affiliations. Jarislowsky Fraser is wholly owned by the partners. The firm has offices in Montreal, Toronto, Calgary and Vancouver.

Investment Philosophy and Style

The firm's philosophy emphasizes the application of fundamental investing principles. Jarislowsky Fraser uses a conservative asset management approach, which focuses on preserving capital and enhancing the real purchasing power of assets under management over the longer term.

The firm relies almost exclusively on internal resources to generate investment ideas. Their research focuses on the following key factors:

- **Industry Attractiveness.** There is a constant search for industries that offer the potential of long-term profitability and are expected to grow faster than the overall economy.
- **Competitive Position.** Market leaders with significant and sustainable competitive advantages that translate into above average return on equity are sought.

- **Quality and Ethics of Management.** The firm identifies companies with a tradition of excellent management and with a proven track record of working for the benefit of all shareholders.
- **Financial Strength.** Companies with a strong balance sheet and the capacity to generate large amounts of cash flow are favoured.
- **Valuation Analysis.** Stocks are purchased when they are discounted below what is believed to be a fair value and sold when they become overvalued relative to their fundamental outlook.

The focus is on large capitalization multinationals that dominate their markets and have consistent growth records and high returns on invested capital. Equity investments are grouped into three categories, which reflect the volatility and expected return potential of the security in order of preference. Group I investments consist of large financially sound companies with proven management teams. Group II investments are typically cyclical in nature. Group III consists of junior companies with exceptional growth opportunities and special situations which tend to be more volatile. At least 80% of the International portfolio is invested in Group I names.

Representative Holdings

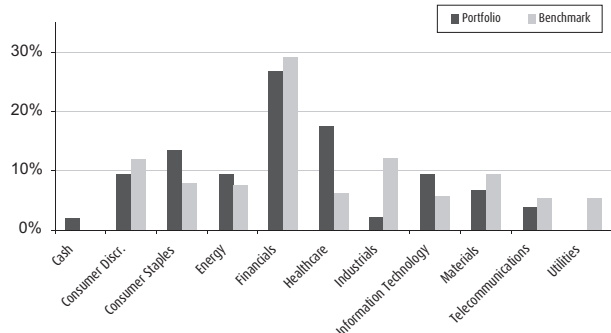
(as of June 30, 2007)

Fresenius Medical CareGermany
HoyaJapan
Banco SantanderSpain
Total SAFrance

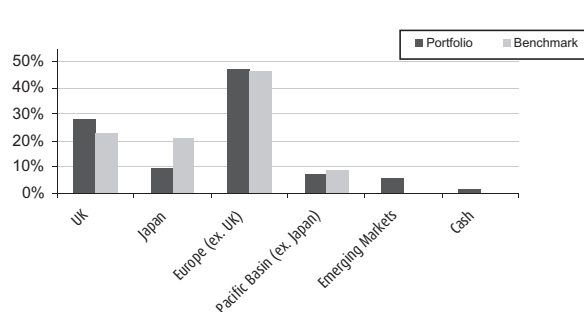
NestleSwitzerland
Reed ElsevierU.K.
CanonJapan
British PetroleumU.K.

HSBC HoldingsU.K.
Groupe DanoneFrance

Sector Allocation



Regional Allocation



Key Personnel

Len Racioppo, CFA

President

Experience: Joined Jarislowsky Fraser in 1989.

Formerly with CN Pension Fund.

Years of Experience: 26

Education: BA, MBA, University of Toronto

Blain W. Caverly

Portfolio Manager

Experience: Joined Jarislowsky Fraser in 1989.

Formerly with CIBC, Bank of America and SEI Financial Services.

Years of Experience: 22

Education: BA, Queen's University

Peter Angelou, CFA

Portfolio Manager

Experience: Joined Jarislowsky Fraser in 1997.

Formerly with Nova Bancorp, Burns Fry Ltd.

Years of Experience: 13

Education: B. Comm, MBA, University of Toronto

Maxime Menard

Portfolio Manager

Experience: Joined Jarislowsky Fraser in 2003.

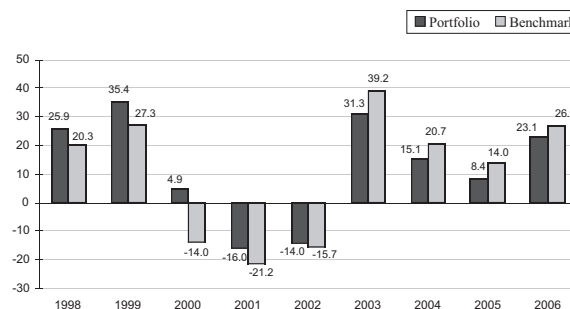
Formerly with Fidelity Investments, Desjardins

Years of Experience: 10

Education: B. Econ, MBA H.E.C.

Calendar Year Performance US\$ (%)

(for the years ending December 31)



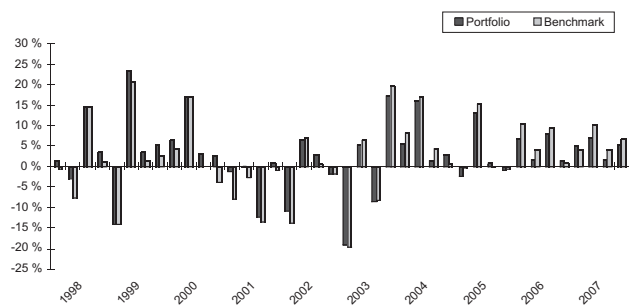
Annualized Rates of Return US\$(%)

(as of June 30, 2007)

| | Portfolio | MSCI EAFE* |
|----------|------------------|-------------------|
| 3 months | 5.2 | 6.7 |
| YTD | 7.0 | 11.1 |
| 1 year | 20.1 | 27.5 |
| 3 years | 16.4 | 22.7 |
| 5 years | 12.9 | 18.2 |
| 7 years | 6.4 | 7.0 |
| 10 years | 10.6 | 8.0 |

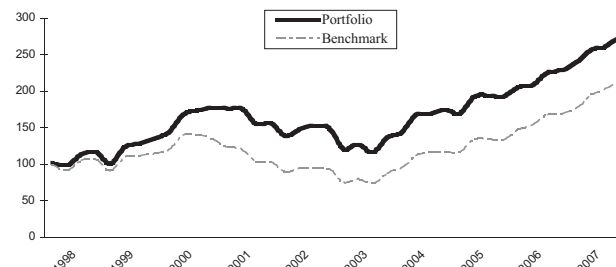
* MSCI EAFE (Europe, Australasia and the Far East)

Quarterly Rates of Return US\$



Portfolio Growth of \$100 US

Ending value as of June 30, 2007: Portfolio \$275 Benchmark \$217



PERFORMANCE NOTE: The data set forth herein has been obtained from Mercer Investment Consulting based on information provided by Jarislowsky Fraser. The indicated rates of return are historical returns based on Jarislowsky Fraser's International Pooled Fund in U.S. dollars. Performance of the model portfolio may differ from the performance of accounts in the BMO Nesbitt Burns Advance Program because; accounts in this program are smaller and so have more concentrated holdings than the model portfolio; the model portfolio holds ordinary shares, whereas client accounts purchase American depository receipts (ADR's) which may not perfectly reflect the value of these ordinary shares.

While this report is produced by BMO Nesbitt Burns Inc. ("BMO NBI"), the data set forth herein has been obtained from Mercer Investment Consulting and/or from publicly available documentation based on quarter end numbers. Past performance is not necessarily an indicator of future performance. Returns are calculated to include all dividends and interest income but to exclude all fees, so that they are directly comparable to the Index shown. The performance shown is based upon a model portfolio and does not reflect the actual performance of clients in the BMO Nesbitt Burns Advance Program. Performance experienced by clients during these time frames may differ from the results quoted in this report, particularly with smaller accounts or accounts that have been open less than one year, or where there have been cash flows in or out of an account. Performance may also differ due to a difference in timing between trades made in an account and the assumed time of a trade made in the model portfolio. Finally, results may differ because accounts in the BMO Nesbitt Burns Advance Program may not purchase IPOs or securities of companies related to BMO NBI or its affiliates, whereas the model portfolio does not have such restrictions. This report is prepared solely for information purposes in connection with the BMO Nesbitt Burns Advance Program. The opinions, estimates and projections contained herein are those of the Portfolio Management Advisory Group of BMO NBI as of the date hereof and are subject to change without notice. BMO NBI makes every effort to ensure that the contents have been compiled or derived from sources believed reliable and contain information and opinions that are accurate and complete. However, BMO NBI makes no representation or warranty, express or implied, in respect thereof, takes no responsibility for any errors and omissions which may be contained herein and accepts no liability whatsoever for any loss arising from any use of or reliance on this report or its contents. Information may be available to BMO NBI or its affiliates, which is not reflected herein. This report is not to be construed as an offer to sell, or solicitation for, or an offer to buy, any securities. BMO NBI, its affiliates and/or their respective officers, directors or employees may from time to time acquire, hold or sell securities mentioned herein as principal or agent. BMO NBI may act as agent, financial advisor and/or underwriter for certain of the corporations mentioned herein and may receive remuneration for same. BMO NBI is a wholly-owned subsidiary of BMO Nesbitt Burns Corporation Limited, which is an indirect subsidiary of the Bank of Montreal. BMO NBI is a member of CIPF, Bank of Montreal or its affiliates may act as a lender or provide other services to certain of the corporations mentioned herein and may receive remuneration for the same. TO US RESIDENTS: This report is not intended to be construed as an offer to sell or a solicitation to buy or sell any products or services of any kind whatsoever including without limitation securities or any other financial instrument in the United States of America or the territories or possessions thereof. TO U.K. RESIDENTS: The contents hereof are intended for the use of non-private customers and may not be issued or passed on to any person described in the Article 11(3) of the Financial Services Act 1986 (Investment Advertisements) (Exemptions) Order 1995, as amended. © "BMO (M-bar roundel symbol)" is a registered trade-mark of Bank of Montreal, used under licence. "Nesbitt Burns" and "Advance Program" are registered trade-marks of BMO Nesbitt Burns Corporation Limited, used under licence.